

IPBES: Intergovernmental Platform on Biodiversity and Ecosystem Services

German IPBES Coordination Office

Funded by



Federal Ministry for the
Environment, Nature Conservation,
Building and Nuclear Safety



Federal Ministry
of Education
and Research



What is IPBES?



IPBES:
Intergovernmental
Science-Policy
Platform on
Biodiversity and
Ecosystem Services

Function: Assess
and synthesize
relevant information
and knowledge and
provide it in policy-
relevant formats

Impact: Informed
decision-making on
biodiversity issues

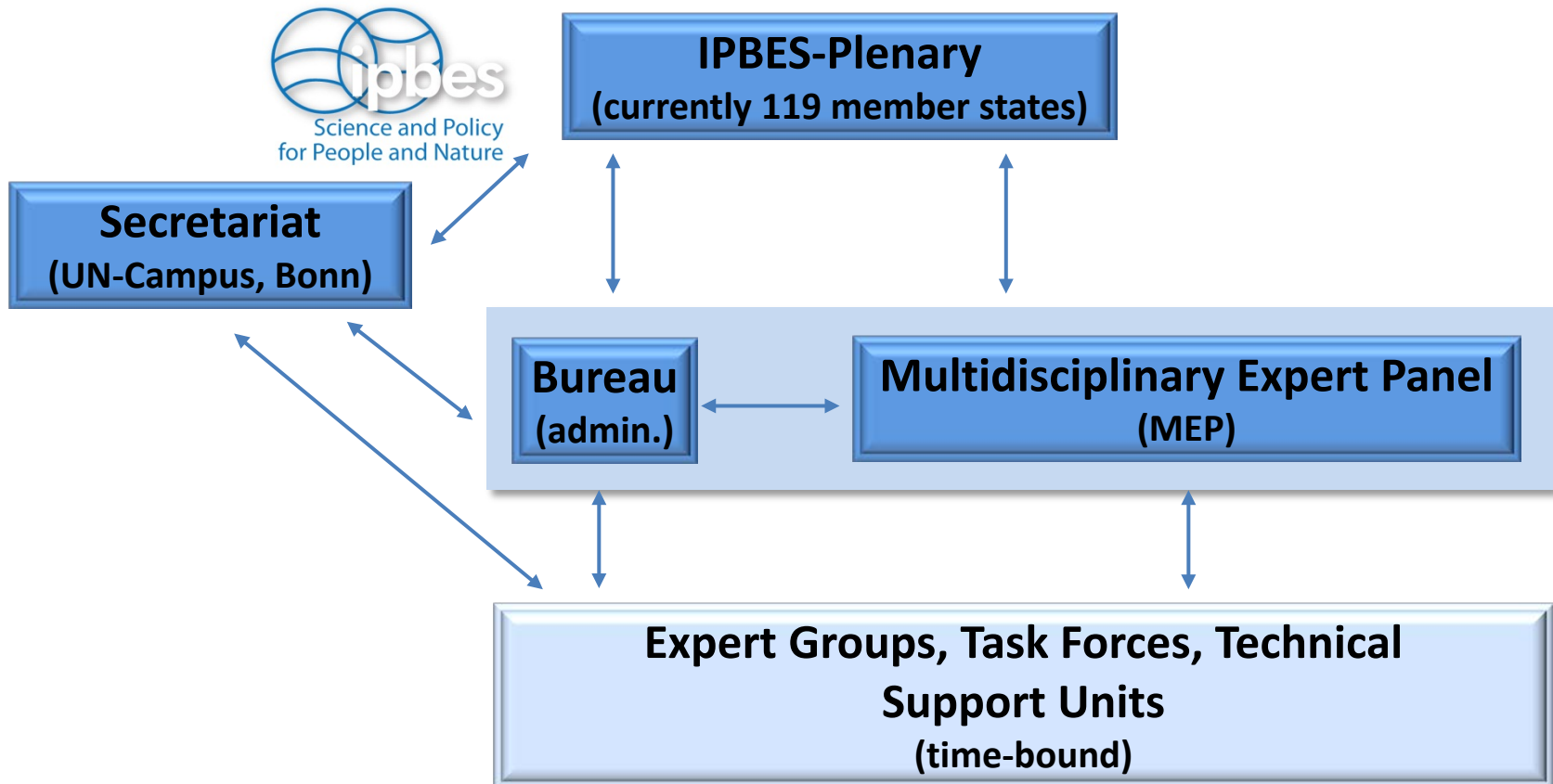
- ❖ Procedures in place for receiving and prioritizing requests for assessments
- ❖ Regular and timely assessments



The four functions of the IPBES

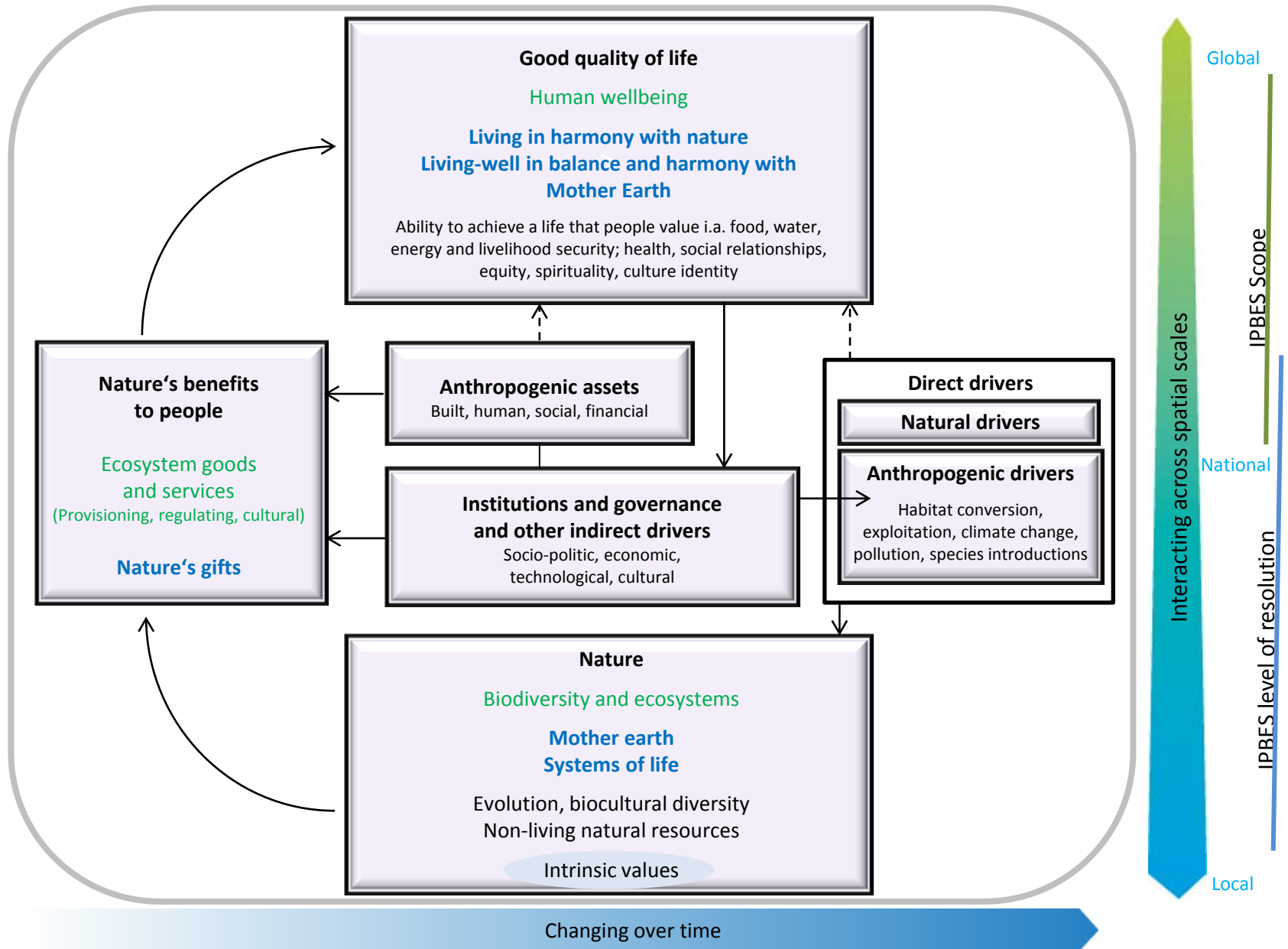
- ❖ **Prioritize key scientific information** needed by policy makers (no new research)
- ❖ **Perform regular and timely assessments** (global, regional and, as necessary, subregional scales and thematic issues)
- ❖ **Identify policy-relevant tools and methodologies** (not prescriptive and mindful of mandates of MEAs)
- ❖ Prioritize and help to catalyse funding and other **support for key capacity-building needs**

IPBES Structure

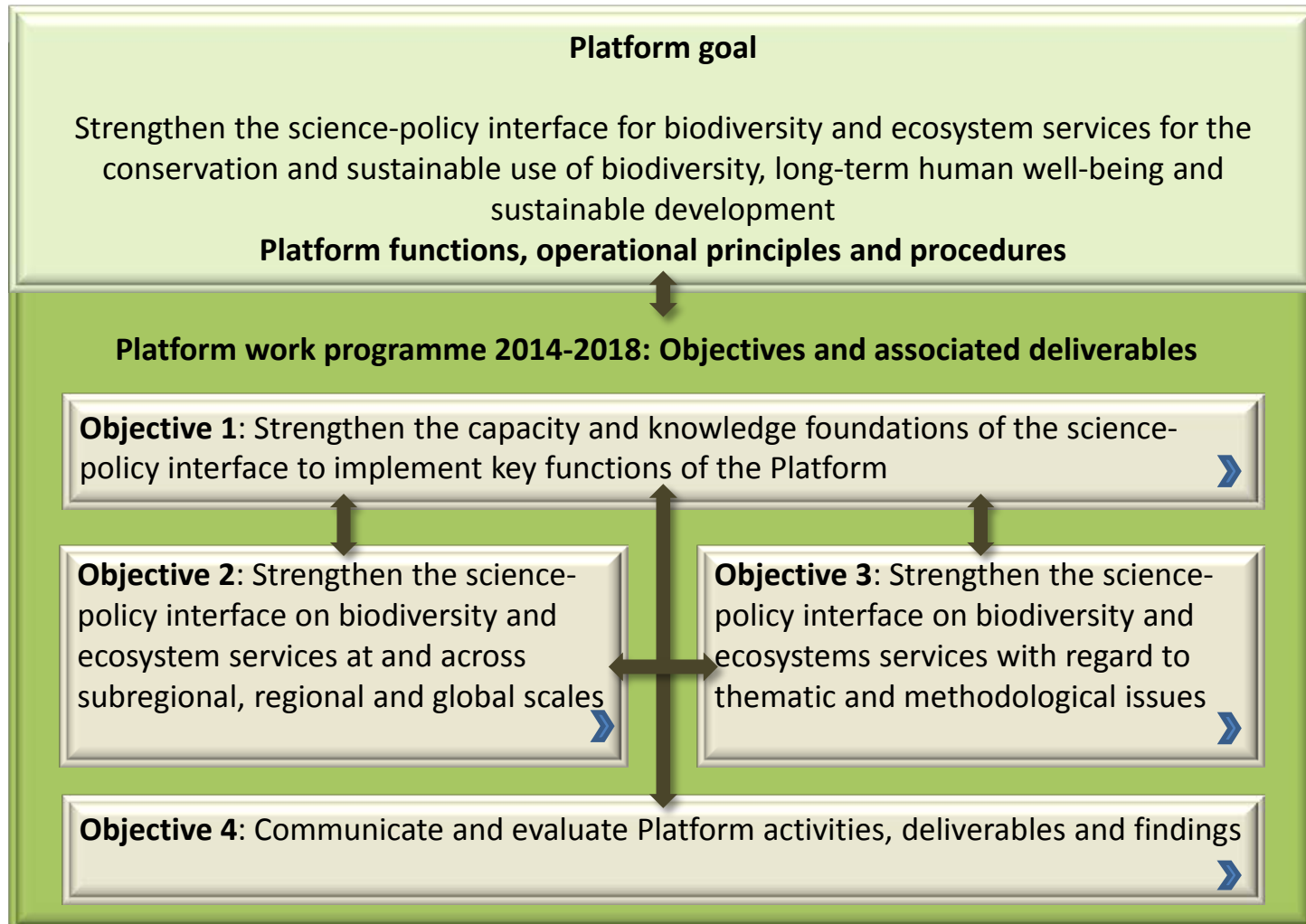


- ❖ United Nations Environment Programme (UNEP) provides administrative services
- ❖ IPBES is funded by a trust fund managed by the Plenary

The conceptual framework of the IPBES



Structure of the IPBES work plan (2014 - 2018)



Status of the IPBES Work Programme (2014-2018)

	2014	2015	2016	2017	2018
★ 1(a/b) Priority capacity building needs matched with resources to implement the work programme					
★ 1 (c) Principles and procedures for working with different knowledge systems					
★ 1 (d) Priority knowledge and data needs to be addressed					
★ 2 (a) Guide G					
! 2 (b) Regional/subregional Assessments					
		2(c) Global Assessment			
★ 3(a) FTA pollination/food production G					
! 3 (b)(i) Thematic assessment land degradation and restoration					
→ 3(b)(ii) Thematic assessment invasive alien species					
→ 3(b)(iii) Thematic assessment on sustainable use					
! 3(c) Policy support tools and methodologies for scenario analysis and modelling					
★ 3(d) Policy support tools and methodologies on value, valuation and accounting G					
★ 4(a) Catalogue of relevant assessments					
★ 4(b) Development of an information and data management plan					
★ 4(c) Catalogue of policy support tools and methodologies G					
★ 4(d) Communication, outreach and engagement strategies					
★ 4(e) Review of the effectiveness of guidance					

Source: IPBES/2/17, simplified by the German IPBES Coordination Office

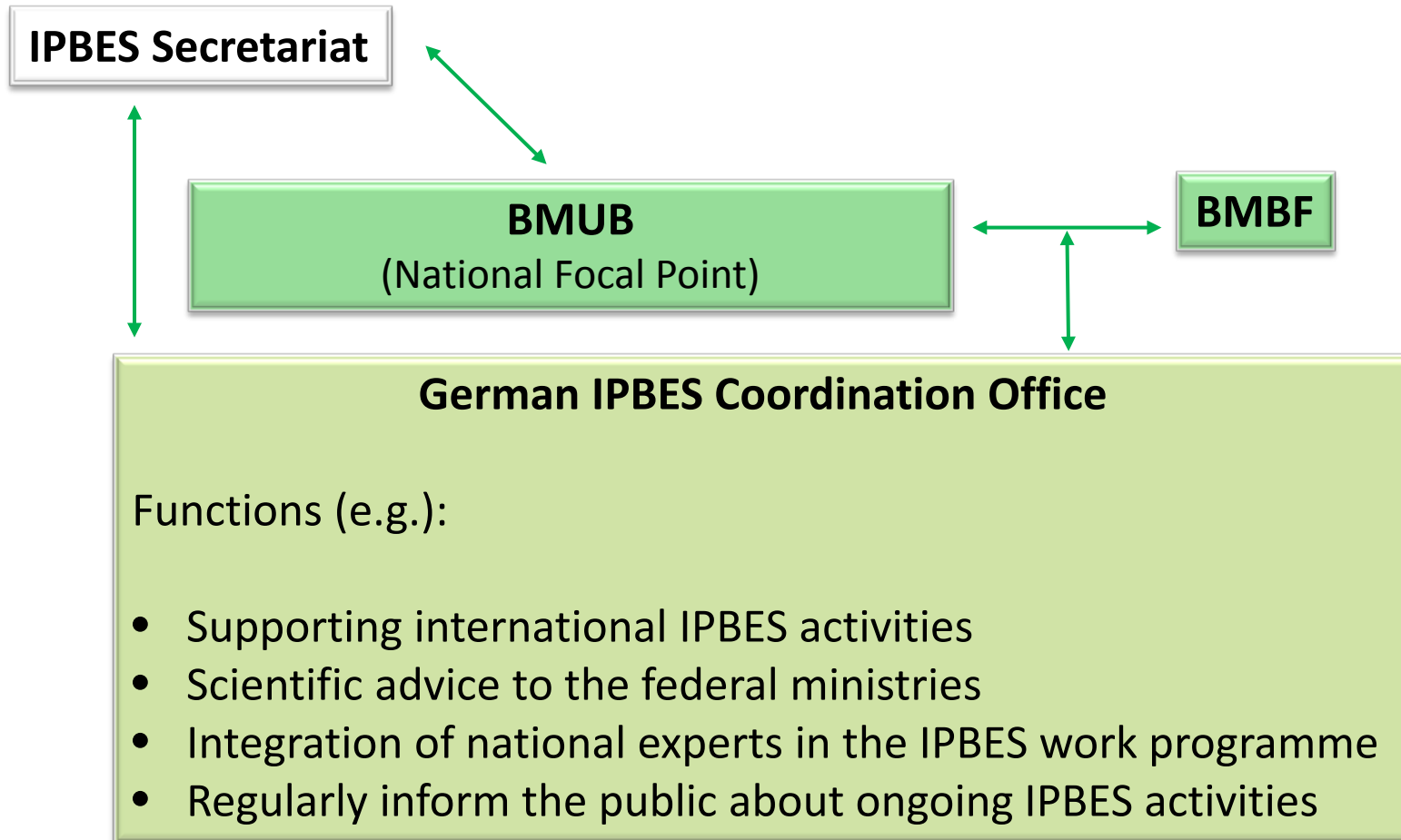
Participation possibilities in IPBES

1. Experts in Expert Groups and Task Forces ➤
 - Nominated by governments
 - Nominated by organisations
2. Reviewers ➤
 - Nominated by governments
 - Nominated by organisations
3. Document review (draft versions) ➤
4. Observer via accredited institutions + Stakeholder Meetings / IPBES plenaries ➤
5. Member of the MEP



„Stakeholder Engagement Strategy“ & „Rules of Procedures“ being negotiated!

The German IPBES Structure





Concrete tasks of the German IPBES Coordination Office

- ❖ Preparation of the **national calls for experts**
- ❖ **Administrative and technical guidance** to experts working in IPBES expert groups and task forces
- ❖ Organisation of **national expert meetings**
- ❖ Identification of **research needs and capacity building** associated to the implementation of the IPBES work programme
- ❖ **Cooperation with the IPBES Secretariat**
- ❖ **Newsletter**
- ❖ News, publications etc... via: www.de-ipbes.de
- ❖ **Organisation of the annual national IPBES Forum**





National IPBES Forum: Meeting point for national experts

1. Presentation and discussion of national and international activities around the IPBES
2. Exchange of experience between members of IPBES expert groups, task forces and other national experts
3. Development of national positions in preparation of the next IPBES plenary (IPBES-3: 12.-17.01.2015, Bonn)

**Third national IPBES Forum:
27. November 2014
Hotel Collegium Leoninum, Bonn**

Registration(until 14.11.2014):

https://secure.pt-dlr.de/pt-conference/conference/IPBES_3FORUM

More questions?

de-ipbes@dlr.de





Thank you!

Contact:

German IPBES Coordination Office

(PT-DLR)

de-ipbes@dlr.de

